

# Sogeti's TMap Plug-in for IBM Rational Method Composer

Making test process and requirements-driven quality practices real

Unstructured or ad hoc testing, without quality criteria for determining and prioritizing risks and test activities, makes it very difficult to predict the test effort, identify risks and execute and control tests effectively. Sogeti's TMAP® Plug-in for IBM® Rational® Method Composer provides process guidance and templates based on Sogeti's structured test methodology. Including special templates for IBM Rational RequisitePro® and IBM Rational® Quality Manager software, this accelerator can help ensure a consistent process delivery, improved insight into quality, and greater traceability of requirements and risks.

## Testing is a complex process

As IT projects have become increasingly dynamic in nature, this has put pressure on testers to manage the conflicting goals of meeting ever shorter deadlines and keeping costs as low as possible, while maintaining (if not improving) product quality. The test process has also become more complex. A test manager's abilities are severely stretched; aligning business requirements, planning resources, evaluating and mitigating product and process risk, and managing stakeholders' prioritized demands.

Organizations need robust and reliable guidance and the appropriate tools to make the test process more manageable, predictable and traceable back to the overall business drivers.

## An accelerator for quality software delivery

For many years, Sogeti has been at the forefront of developing solutions for the evolving challenges of software testing. At the core is Sogeti's unique industry standard Test Management approach called TMap®. Codified from thousands of engagement experiences and a proven strategy and execution blueprint, it has been selected as the standard test approach by many leading organizations in Europe and the US.

TMap provides a complete end-to-end test process framework for setting up and executing structured tests, including detailed and logical instructions to help quality teams drive down test costs, reduce 'time-to-market' and improve software quality.

To make this framework more accessible and easier to deploy quickly at a client's site, Sogeti created a TMap Plug-in for IBM Rational Method Composer software. This enables you to formalize the TMap practices and methods, adapt priorities and publish a web site.

Migrating the rich content from book chapters to downloadable templates, the method authoring Plug-in includes the complete TMap best-practice framework, from requirements to test cases and defect management.

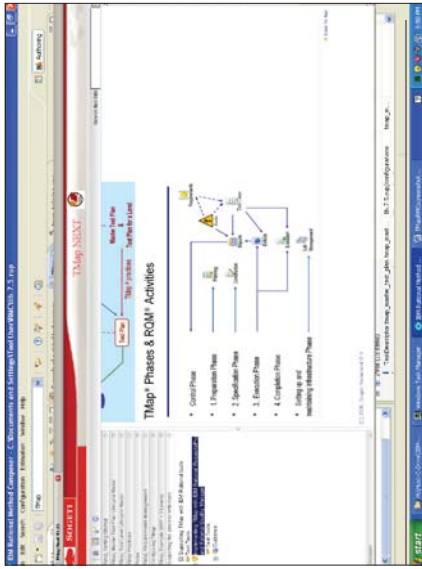


Figure 1

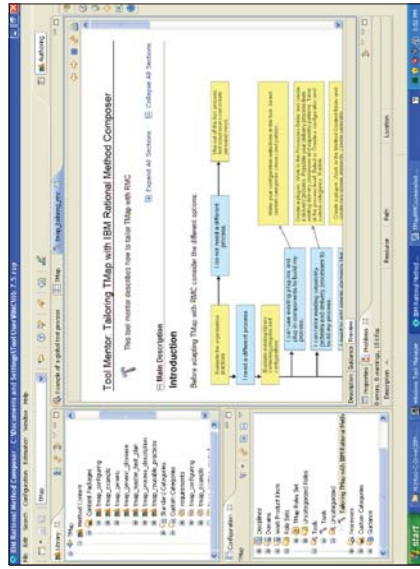


Figure 2

## End-to-end TMap planning and execution

This complete TMap tool box provides the test professional with the essentials for planning and executing a successful test project that meets project goals of time, cost and quality. It is an end-to-end approach from requirements to the test cases. See Figure 1.

The unique TMap Plug-in can enable teams to:

- **Formalize** an organization's testing strategy, process and practices, from needs definition, risk analysis through to verification, using the TMap framework;
- **Adapt, tailor and reuse** the Plug-in assets and templates to your specific context, and design customized test activities;
- **Industrialize** and where applicable automate the testing process. Tool mentors provide guidance on how to adapt the tools to accelerate the testing process. See Figure 2.

Fig. 1  
A mapping of TMap phases and supporting IBM Rational requirements-driven quality activities

Fig. 2  
Tool mentors in Sogeti's TMap Plug-in for IBM Rational Method Composer provide guidance on how to adapt tools to accelerate the testing process.

- **Capture and publish** the customized documents to a shared project website, making valuable testing knowledge available immediately to distributed stakeholders across the project.

## Improving requirements management and risk assessment

Sogeti's underlying test methodology advocates a risk-based approach, so we also help customers utilize their investment in IBM Rational tools by configuring them to focus on risk and leverage iterative development best practices.

Additional risk-analysis functionality is therefore provided as part of the TMap Plug-in.

- An IBM Rational RequisitePro template accelerator. A series of XML calculation files customized to perform this activity with IBM Rational RequisitePro – a requirements management tool that enables project teams to better manage requirements, write good use cases, improve traceability, strengthen collaboration, reduce project risk and increase quality.

The TMap Plug-in provides risk analysis practice while IBM Rational RequisitePro calculates defined risk classes for the test objectives and links detailed requirements in the test plan to test cases, scripts and results; see Figure 3. Once complete, this information can be exported into IBM Rational Quality Manager software, a centralized test management hub to build and manage test plans throughout the delivery life cycle.

Also included, the TMap Master Test Plan template for IBM Rational Quality Manager provides components to produce a comprehensive test plan based on TMap. The downloadable file provides the essential sections, suggesting subject matter for each section and providing the means for customizing automatic fields. The plan can then be scaled to fit the size and complexity of each testing effort.

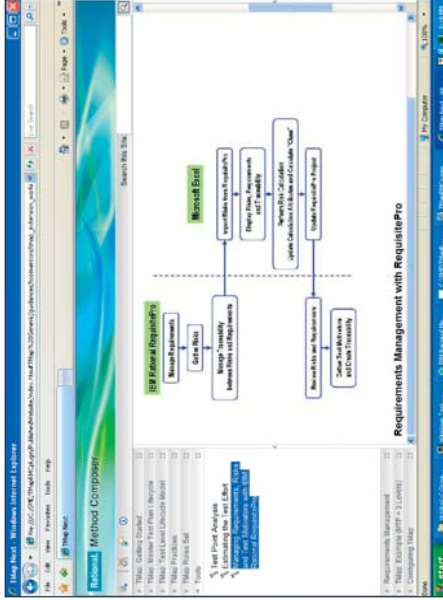


Figure 3

## Ready for IBM Rational software

### The benefits of the TMap Plug-in with IBM Rational Software

By bringing together best practice structured test process and leading quality management tools, organizations can realize a number of business benefits:

#### With the TMap Plug-in

- Greater flexibility to customize both the process and test assets, to align to both an organization's business model and its business strategy

- Improved insight into software quality, leading to reduced test, maintenance and remediation costs

- Greater consistency and faster deployment of process delivery, reducing time to market; standardization starts to become embedded and the adoption of quality best practices can be accelerated
- Unify tracking, validation and traceability of requirements to defects

- Improved transparency of the process and roles & responsibilities, reducing confusion and increasing collaboration
- Greater sharing of information between team members and immediate access to reusable test assets.

### With the TMap accelerator for IBM Rational RequisitePro

- Analyze the potential impact of risks, be more informed and risk-based approach and focus their test efforts more effectively and confidently

### With TMap Master Test Plan templates for IBM Rational Quality Manager

- Quickly produce a complete governing document from business objectives through to project risk assessment and countermeasures
- This test plan template has been successfully validated to the Ready for IBM Rational software requirements, indicating that it has met IBM's guidelines for safe interoperability with IBM Rational Quality Manager.

## Sogeti can help achieve your testing goals

Using Sogeti's TMap Plug-in for IBM Rational Method Composer, together with integrations for IBM Rational RequisitePro and IBM Rational Quality Manager, test teams can apply a more effective business-driven approach to software testing, with an holistic view of risk, planning and traceability of requirements.

Sogeti is committed to providing implementation expertise and support for many of the leading testing and quality management tools, and to help clients take advantage of the continual flow of tool innovations that can improve all aspects of testing.

Fig. 3  
An end-to-end approach with IBM Rational RequisitePro and IBM Rational Quality Manager



For more information on IBM Rational Quality Management Software, visit: <http://www-01.ibm.com/software/rational/offerings/quality/>

IBM, the IBM logo, ibm.com, Rational, RequisitePro are registered trademarks and Jazz is a trademark of International Business Machines Corp., in many jurisdictions worldwide. Other product and service names might be trademarks of IBM or other companies. A current list of IBM trademarks is available on the Web at [www.ibm.com/legal/copytrade.shtml](http://www.ibm.com/legal/copytrade.shtml). IBM is not the licensor of this Business Partner's product and does not make any warranties regarding this Business Partner's product. The information contained in this documentation is provided for informational purposes only. While efforts were made to verify the completeness and accuracy of the information contained in this documentation, it is provided "as is" without warranty of any kind, express or implied. In addition, this information is based on IBM's current product plans and strategy, which are subject to change by IBM without notice. IBM shall not be responsible for any damages arising out of the use of, or otherwise related to, this documentation or any other documentation. Nothing contained in this documentation is intended to, nor shall have the effect of, creating any warranties or representations from IBM (or its suppliers or licensors), or altering the terms and conditions of the applicable license agreement governing the use of IBM software. This publication contains other-company Internet addresses. IBM is not responsible for information found on these Web sites.

Copyright © 2010 Sogeti or one of its affiliates. All rights reserved

TMap® TMap NEXT® and TPI® are registered trademarks of Sogeti.

V1.1 — 01/10

---

## Contact

To learn more about Sogeti's Business Driven Test Management solutions based on IBM Rational software, please contact your local Sogeti office or:

**Sogeti**  
**Global Testing Solutions**  
Lange Dreef 17  
4131 NJ Vianen  
The Netherlands

**Stefan Gerstner**  
**International Testing Business**  
**Development Manager**  
E [stefan.gerstner@sogeti.nl](mailto:stefan.gerstner@sogeti.nl)  
T +31 (0)88 660 66 00 ext 2592

---

## About Sogeti

Sogeti is a world leader in innovative, business-driven quality assurance and testing services. As independent and objective testing specialists, our clients benefit from the identifiable results from our onshore and offshore cost-effective testing solutions: Managed Testing Services, TMap®-based project and program testing, and TPI® — test process improvement. As the largest testing service provider in Europe and USA, with over 2,800 test professionals and a further 5,000 application specialists with test experience, in 14 countries worldwide, we help organizations achieve their testing and QA goals.

Sogeti is a leading provider of professional technology services, specializing in Application Management, Infrastructure Management, High-Tech Engineering and Testing. Working closely with its clients, Sogeti enables them to leverage technological innovation and achieve maximum results. Sogeti brings together more than 20,000 professionals in 14 countries and is present in over 200 locations in Europe, the US and India. Sogeti is a wholly-owned subsidiary of Cap Gemini S.A., listed on the Paris Stock Exchange.

Belgium — Denmark — France — Germany — India — Ireland — Luxembourg — Netherlands  
Norway — Spain — Sweden — Switzerland — United Kingdom — United States

[www.sogeti.com](http://www.sogeti.com)